



Social
Interest
Group

Impact Report

Criminal Justice Services

Year ended 31 March 2024

Charity no. 1158402

Company no. 09122052



Table of Contents

4	Executive Summary
6	Penrose Drive IAP
14	CFO Activity Hubs
20	OPD HASS
26	HMP Altcourse
34	HMP Lowdham Grange
38	Glossary

Executive Summary



We are proud to produce our inaugural annual Criminal Justice Services Impact Report. Exceptional outcomes have been achieved across our Criminal Justice Services, which have made a real difference to the often complex and challenging lives of the people we support. This report aims to bring this impact to the forefront and celebrate key achievement for the financial year 2023 - 2024. All our work is underpinned by our Theory of Change; supporting our residents and participants to develop and reframe their Identity, Relationships and sense of Community. Our services are diverse but our approach is consistent; delivering holistic, trauma-informed care that is highly sensitive to risk, but also recognises the strengths, aspirations and potential in every person we support.

Across the Social Interest Group our Criminal Justice Services includes SIG Penrose services: Penrose Drive Independent Approved Premises (IAP), Offender Personality Disorder Housing and Support Services (OPD HASS) and the CFO Activity Hubs, and SIG Safe Ground services: HMP Altcourse Family Services and HMP Lowdham Grange Family Services.

Penrose Drive is our flagship Independent Approved Premises. It focuses on delving deeper to help transform lives and bridge the gap between Custody and Community. Aside from the outstanding performance across the contract, it is evident that the principles of Enabling Environments have been embedded from the outset. I am most proud that we have hired former residents across Social Interest Group, providing meaningful access to employment.

OPD HASS is an established service offering intensive support for men and women across the London OPD Pathway. SIG Penrose retained the Male HASS contract and continues to work with commissioners on the model and design of the female provision to ensure its complex provision is fit for purpose.

IDENTITY

Readers appreciate accurate information

Reframing identity and mindset based on strengths and aspiration, not stigmatising labels.

RELATIONSHIPS

Developing skills to build, maintain and trust positive, healthy relationships.

COMMUNITY

Empowering through a stake in society, and a sense of purpose and belonging.

Social Interest Group

Impact Report. Criminal Justice Service.
For the year ended 31 March 2024

There have been enhancements in the partnership working across the pathway, with the introduction of an Accommodation Steering Group and improved assurance around moving on, ensuring that the residents are supported with the transition into independent living. Over 2023 / 2024, Her Story House has seen a significant shift in occupancy, highlighting the impact of collaboration with Probation, Prisons and pathway partners to ensure that this service is utilised fully.

The CFO Activity Hubs contract will end in July 2024; however, SIG Penrose will exit this contract on a high, transforming delivery over 2023-2024, with a focus on meaningful group work. SIG Penrose supported 163 participants through group work and 1-1 delivery, creating bespoke plans to support individual journeys.

In 2023, the art of the possible was introduced to our family with SIG Safe Ground, as we have taken on Family Service contracts to deliver arts-based therapeutic programmes to men in prisons.

The power of this approach is phenomenal, and a highlight of the year for me was attending the presentation of the first Fathers Inside programmes at HMP Altcourse. The 12 men who completed this 4-week intensive programmes spoke highly of the impact this has had on them and the difference the “toolkit” they built will make in their future.

Whilst this report highlights some incredible achievements over the past year, it comes at a time of complex challenges within the Government and the Criminal Justice System. Social Interest Group seeks to influence systemic change, and our External Affairs team is leading in this area.

The ambition for our Criminal Justice Services in 2024-2025 is to focus on continuous improvement, develop and empower our staff, and to enhance our evaluation of service delivery to better measure impact and understand “what works.” We consider this a success if we can support one person to desist from crime and move on positively to live independently. We want to capture and evaluate these successes to understand what made the difference so we can model our services and replicate what works to achieve the most significant impact.

Paul Addicott

Head of Criminal Justice Services



Penrose Drive

Service Manager: Eva Katsani





Penrose Drive

Hope and Rehabilitation

Penrose Drive offers comprehensive support and accommodation, facilitating men's transition from prison to community living. This 24/7 service aligns with the public protection and rehabilitation aims of Her Majesty's Prison and Probation Service (HMPPS), working closely with the Ministry of Justice, the Probation Service, and key stakeholders.

Penrose Drive accommodates 25 residents in a Psychologically Informed Environment (PIE), providing tailored support and supervision. The focus here is not merely housing but actively engaging residents in addressing the root causes of their behaviour and fostering personal development.

At the core of Penrose Drive's efforts are rehabilitative activities and interventions to reduce reoffending and equip residents with the necessary skills for successful reintegration. These initiatives help build resilience and open pathways to employment, training, and education, empowering residents to envision and work towards a positive future.

Penrose Drive

Our Impact

At Penrose Drive, 2023 was a year of substantial progress and key developments, highlighted by our continuous efforts to support consistency and improvement within the independent approved premises estate. Notably, Penrose Drive has enhanced its role in the community by joining the National Approved Premises Association (NAPA) as an Executive Board Member, underscoring our commitment to leadership and excellence in rehabilitation services.

Penrose Drive's full calendar of activities is designed to add social value and address key areas such as improving health and wellbeing, enhancing community integration, and tackling economic inequality. These activities range from dedicated Penrose Courses at the CFO Activity Hub to diverse weekly engagements like the Residents Forum, Breakfast Club, and Gardening Project. Our residents also benefit from Job Fair visits, community trips to museums and zoos, Movie nights, and Puzzle Clubs.

More focused sessions include healthy cooking on a budget, Psychology groups, and various one-on-one activities like arts and crafts, Mindfulness, and board games. Specialised forums and groups, such as the Move-on Forums, Cycling Maintenance and Safety, and the Men's Group, focus on managing perceptions and expectations, while our Support for Dads initiative targets family relationships.

We engage with numerous charities and agencies to offer the best support possible. Collaborations include free gym access, visits from the St Giles Trust, Bounce Back programmes, and mental health support through initiatives like "It's Okay Not to Be Okay," alongside regular Alcoholics and Narcotics Anonymous Groups. This broad spectrum of activities and partnerships exemplifies Penrose Drive's dynamic approach to creating a supportive and transformative environment for all residents.



Penrose Drive

Our Impact Stats

66%



Supported into Move-On Accommodation

18

Residents into
employment



31%

Recalled for public protection



160

Residents
supported



2

Residents
employed in
permanent roles
within SIG



3199

Rehabilitative
activity contacts

Penrose Drive

Resident Impact News

One Year of Operations

Penrose Drive celebrated our first year of operations. This celebration, marked by a community barbecue, was not just a festivity but a testament to the progress and resilience of our community. It allowed residents and staff to reflect on the year's achievements and challenges, fostering a sense of belonging and achievement among all involved.



Weekly Puzzle Group

Support comes in many forms, and the biggest impact is not just from tailored interventions. Our Activities Coordinator set up a "Puzzle Group," a space for our residents to slow down and reflect while speaking with our Forensic Psychologist in a psychologically informed environment. These have been popular activities for residents, which helps build a sense of community. A resident thanked the team with a letter for support during an activity and took a photo of their creation before moving to independent accommodation.

Breakfast Club

We want to create a sense of community, so our chief provides a cooked breakfast each week for the residents to meet with staff and discuss any issues, share information and provide an opportunity for feedback and suggestions. We have found that having a forum over food has helped to build relationships and improve our interaction with residents and staff.



Penrose Drive

Testimonies

Penrose Drive is proud to have positively impacted the lives of our residents and participants. These testimonies highlight the significant changes and meaningful benefits they have experienced.

“I am a better person.”

“This is a safe place.”

“Gave me the tools that I need.”

“I am grateful for the people I have around me.”

“It exceeded my expectations.”

“I am treated like a person not a prisoner.”

Penrose Drive

Resident Impact Stories



Staff Empowerment

Staff are at the heart of everything we do. We empower and develop our staff to be the best versions of themselves. Regular Team Building, training, and support greatly strengthen collaboration and build stronger teams. This has helped create a supportive workplace, greatly enhancing the environment for our residents.

“Your staff team are just great and the AP is fantastic – with a nice atmosphere for residents. You should be very proud. ”

Manjinder Purewal, Deputy Director of Community Accommodation Services, HMPPS

Above and Beyond - Case Study Marcus

We cared for a gentleman... with dementia.

Our team implemented a comprehensive tracking system to monitor essential daily activities, including meals, hydration, and medication management. This system ensured that these critical tasks were consistently addressed.

Additionally, we thoughtfully curated activities tailored to the resident's cognitive capacity, offering engaging pastimes such as puzzles and crosswords specifically designed for individuals with dementia. As a result of this effort, we have received compliments from our Probation Colleagues at Harrow and Barnet PDU, with their HoS sending the feedback below to us.

“I just wanted to send a quick note to say thank you to all your staff working with Marcus at the AP. They have gone above and beyond in supporting him in a compassionate and considerate manner, which is appreciated. ”



Penrose Drive

Future Outlook

April 2024 – March 2025 Priorities

Our focus is directed towards five key priority areas that have been identified for strategic attention:

- Enabling Environments
- Individualised Support Provision
- Staff Training and Development
- Community Engagement
- Continuous Quality Improvement

Enabling Environments

We will continue to refine our living spaces and communal areas to ensure they are conducive to positive interactions and personal growth.

Individualised Support Provision

We will intensify our efforts to improve individualised care plans, based on the specific challenges and strengths of each resident

Staff Training and Development

We will ensure that all staff members are equipped with the latest knowledge and skills required to support the complex needs of our residents. Regular training sessions will be held to keep staff updated on best practices and emerging trends in care provision.

Community Engagement

We will increase our outreach efforts through workshops, seminars, and partnerships with local organisations. To strengthen ties with the local community and relevant stakeholders, ensuring a holistic approach to rehabilitation and support.

Continuous Quality Improvement

We will maintain and enhance the quality of our services through ongoing evaluation and feedback. Regular feedback from service users, detailed resident progress tracking, and periodic treatment outcomes reviews. Whilst we are satisfied with quality performance, we strive to continuously improve.

“...high levels of engagement, meaningful interactions across the board. Over and above in terms of service delivery. Services are delivered to a very high standard with processes and policies fully embedded. Excellent performance.”

Diane J. Orlebar, Head of Public Protection
London Approved Premises

CFO Activity Hubs

Service Manager: Tina Moniro



CFO Activity Hubs

Empowering Change and Community Integration

The CFO Activity Hubs are commissioned by the Ministry of Justice and part-funded by the European Social Fund. Reed in Partnership delivers them to participants in two hubs across London. SIG Penrose delivers activities to any participant assessed as High or Very High Risk and all female participants. They have supported 163 men and women transitioning back into society, providing more than just services—they offer a critical lifeline for individuals on licence or serving a community sentence.

This initiative fostered through collaboration between SIG Penrose and Reed in Partnership, focuses on creating safe, nurturing environments that facilitate access to essential services. These services meet immediate needs and empower participants to take significant steps towards rehabilitation and community reintegration.

The CFO Activity Hubs instill a sense of purpose in participants. They are designed for participants who are not motivated and are the hardest to engage, helping to prepare them for mainstream Education, Training, and Employment provision. This service does not replace existing services but supports participants in engaging and creating growth with the impact of preventing reoffending. This focus on skill development and clear, attainable goals is essential for successful reintegration into the community.

The CFO Activity Hubs serve as access points for services and communities that nurture growth, resilience, and hope. With dedicated support and a firm belief in each individual's potential, these hubs are instrumental in breaking the cycle of reoffending and fostering a society where everyone has the opportunity to thrive.



CFO Activity Hubs

Programmes

The SIG Penrose programmes at CFO Activity Hubs is designed to equip participants with essential skills and knowledge to facilitate their successful reintegration into the community. Through a blend of therapeutic and practical approaches, these programmes aim to enhance participants' confidence, self-esteem, and social identity, fostering positive outcomes and reducing the likelihood of reoffending.

Insight

Combines Cognitive Behavioural Therapy with theatre and storytelling to enhance communication and cooperation skills. Participants engage in creative and practical exercises that continue their development beyond the sessions.

Ndani

An experiential learning programmes that integrates Drama Therapy, Cognitive Behavioural Therapy, and Desistance Theory to help participants adjust positively in the community. It boosts resilience, improves emotional management, and encourages positive social identities.

Resonate

Focuses on understanding, managing, and coping with emotions. Participants learn to identify their feelings, understand their impact on relationships, and develop new strategies for emotional management using creative tools.



HomeFirst

An independent living programmes that prepares participants for a successful tenancy. It includes creative learning activities and e-learning exercises to enhance renting and maintaining accommodation skills.

Amplify

Explores motivation and employability, teaching participants how to stay motivated, overcome barriers, and effectively present their skills. Includes practical exercises, CV writing, and mock interviews to prepare for employment opportunities.

CFO Activity Hubs

Resident Impact Stories



Jane's Story

The CFO Activity Hub has effectively transformed lives through targeted interventions and personalised support. A notable example is Jane, a participant who overcame significant challenges related to alcohol dependency. Referred to the CFO Activity Hub due to an alcohol-related offence and subsequent 18-month license supervision, Jane's recovery was initially hindered by a home environment conducive to her addiction.

Intervention by the CFO Activity Hub

Adopting a tailored approach, the CFO Activity Hub helped Jane significantly reduce her alcohol consumption. More importantly, she became actively involved in her rehabilitation, participating in the RESET programmes, which bolstered her journey with group sessions and peer support. This comprehensive support not only aided her recovery but also helped reintegrate her into a supportive community, alleviating her sense of isolation.

“ Without the CFO Activity Hub, I would never have thought I could come out of my dark drinking hole as I didn't see any light at the end of the tunnel.

But I do now, and it has made me more confident about gaining employment too. I'm so pleased and grateful for all the help I currently receive from the Hub and RESET. Thank you. ”

CFO Activity Hubs

Our Impact Stats

163

Enrolments



34

Supported into employment



81

Residents Supported with independent living

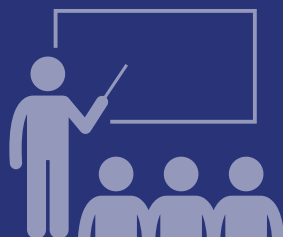
55

Total group activity



34

Supported into training



+100.4%

Increase in delivery
22/23 - 23/24



CFO Activity Hubs

Inside Out: A Closer Look

SIG Penrose introduced The Inside Out Clothing project to the CFO Activity Hubs. Inside Out is the UK's first clothing brand created, designed, and hand-produced by young ex-offenders. Their mission is to generate realistic job prospects for young people leaving the justice system by creating opportunities in business through fashion and design.

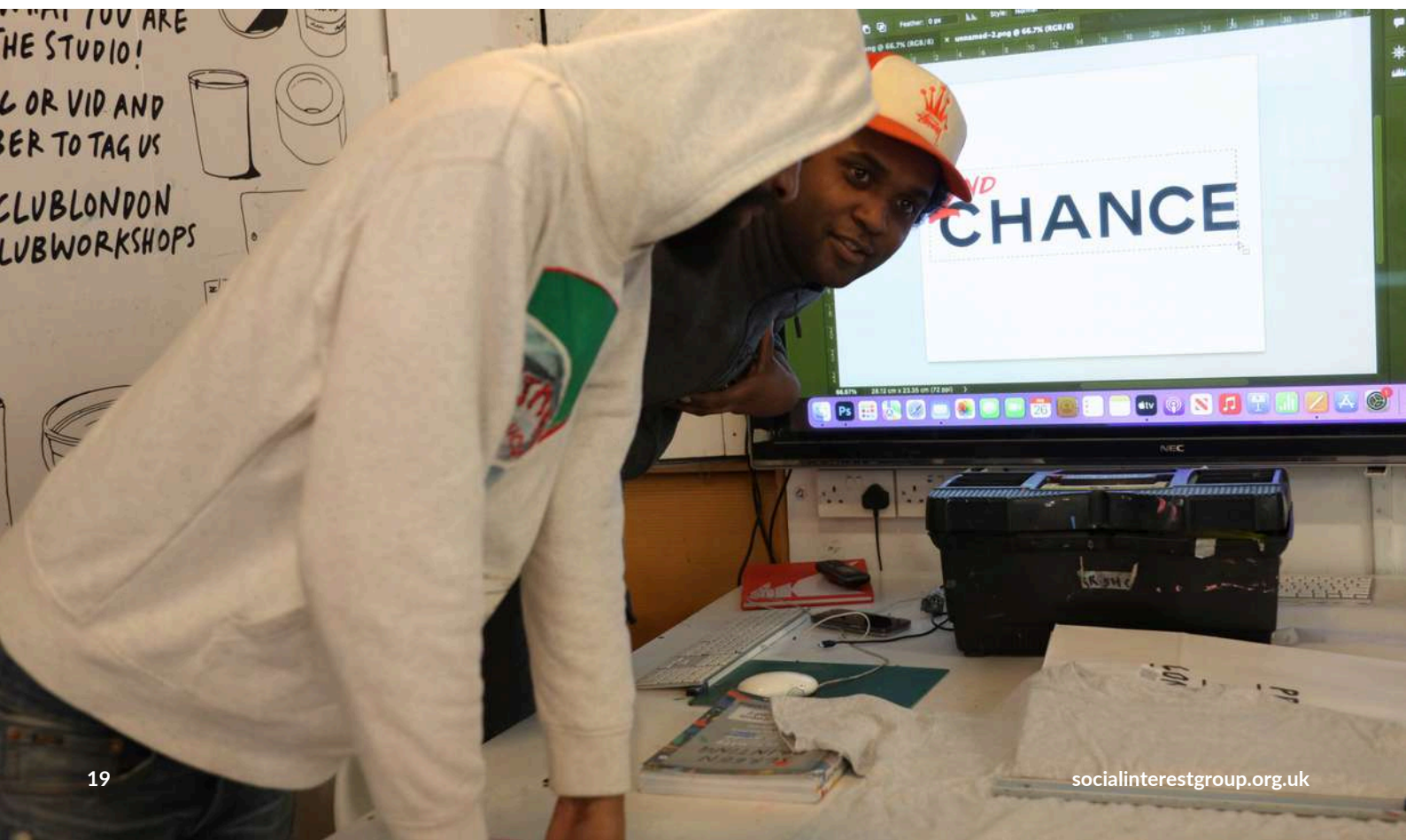
We are pleased to have successfully enrolled 7 participants into the Inside Out project. Each of our participants has become a brand ambassador, with their stories of hope and wanting a second chance. All proceeds from sales go back to the charity, enabling them to continue the Inside Out project each year. As well as paid employment for our participants at their pop-up shop, with participants given a 10% bonus for each item of clothing they sell.

During the Inside Out project, the course participants gained top business, fashion, employment, and personal development skills. CFO Activity Hub participants had great success moving on.

- 2 now work for Inside Out
- 2 have opened their own store
- 1 is a chef at a London restaurant

This partnership with Inside Out has been a huge triumph, with a 100% success rate. Founder Greg McKenie said, "We have now worked with more than 20 young people over three years."

**NONE OF OUR PARTICIPANTS
HAVE RE-OFFENDED OR GONE
BACK TO PRISON**



OPD HASS

Service Manager Susan Worrell





OPD HASS

Supporting Pathways to Independence

The Offender Personality Disorder (OPD) Housing and Accommodation Services (HASS) are designed to support the unique needs of offenders within the OPD Pathway. This service provides specialised housing and support essential for the rehabilitation and reintegration of its residents into society.

OPD HASS is more than a housing solution—it's a comprehensive system facilitating the transition from structured environments to fully independent living. Recognising the multifaceted challenges faced by individuals with personality disorders, the service

offers targeted support that addresses emotional, psychological, and practical needs.

The core mission of OPD HASS is to create a stable and supportive environment that nurtures rehabilitation and recovery. It provides high residential specialist housing that plays a pivotal role in the OPD Pathway, empowering residents with the skills, confidence, and resources needed to manage the complexities of independent living successfully.

OPD HASS

Resident Case Studies

Carol's Story

Carol moved into HerStory House (HSH) in January 2024, following 20 years in custody. The transition from a long-term custodial environment to community living presented numerous challenges, yet Carol demonstrated remarkable resilience and determination throughout her time at HSH.

Achievements

Despite the hurdles associated with reintegration, Carol successfully navigated several critical aspects of her post-release life:

- **Financial Independence:** Independently set up a bank account and sorted out her benefits, ensuring financial stability.
- **Identification and Healthcare:** Carol obtained the necessary identification documents and registered with both a GP and a dentist. Additionally, she took proactive steps to address her vision needs by independently acquiring glasses from Specsavers.
- **Community Integration:** For almost three months, Carol remained in the community, adhering to some of her resettlement plan and accessing various support services in the community with extensive support from HSH.

Impact

Carol's case highlights HSH's crucial role in supporting individuals from custody to reintegrate into society. The steps Carol took to begin to overcome institutionalisation and engage with essential services demonstrate the positive impact of HSH in fostering independence and resilience among residents.

“ Impact is not measured just by the end result, but the progress made. ”

Tom's Journey at Farley Road

Tom's story is a testament to the supportive environment at HASS. Since moving to Farley Road, Tom has gained confidence, managed his emotions more effectively, and achieved significant milestones such as passing his driving theory and motorbike license tests. His involvement in the garden project and other activities like cooking on a budget and dog therapy has allowed him to find a supportive community within HASS, helping him to manage his severe depression and integrate back into society more smoothly.



OPD HASS

Our Impact Stats

+14%

HSH increase in length of stay



30

People
Supported

10

Supported into accommodation

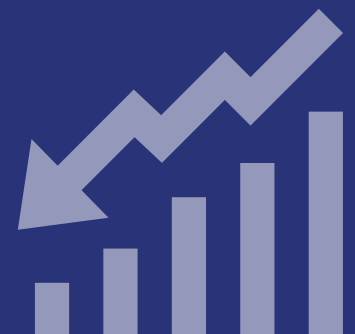


63.6%

Men moved on successfully

14.97%

Reduction in voids
22/23 - 23/24



OPD HASS

Resident Case Studies

Olivia's Story

Olivia moved into HerStory House (HSH) in August 2022. Initially, she faced significant challenges adapting to her new environment. However, she transformed into an integral part of the community through consistent support and engagement with the services offered at HSH.

Achievements

Olivia's journey at HSH is marked by her active involvement and personal growth:

- **Leadership and Participation:** Olivia played a crucial role in the service by participating in interview panels for new staff, supporting the hub's development, and leading in maintaining the garden and fish pond.
- **Therapeutic Engagement:** Olivia engaged with Mentalisation-Based Therapy (MBT), Bluebird, and her clinical practitioner, making full use of the available services to address her mental health needs.
- **Skill Development:** Initially nervous about cooking due to a fear of using knives, Olivia gradually overcame this anxiety. She went on to regularly cook meals for both residents and staff, showcasing a significant boost in her confidence.
- **Independence:** With the support of HSH staff, Olivia overcame her initial anxieties about public transport. She transitioned from someone reluctant to venture out alone to someone who confidently took trips around London and even visited the countryside in Gloucestershire. This marked a profound shift in her independence and self-assurance.

In February 2024, Olivia moved into her own flat. Despite the end of her residency at HSH, she continues to stay connected by attending the Women's Hub and checking in with her keyworker, demonstrating the importance of the post-accommodation support at HASS. As she approaches the end of her license in June, Olivia is apprehensive about the reduction in her support network and is looking forward to planning a holiday to Italy or Spain.

Impact

Olivia's story is a powerful testament to the transformative impact of HSH's support. Her journey from anxiety and dependence to confidence and independence illustrates the comprehensive and compassionate approach of HSH in empowering residents to rebuild their lives and achieve their full potential.

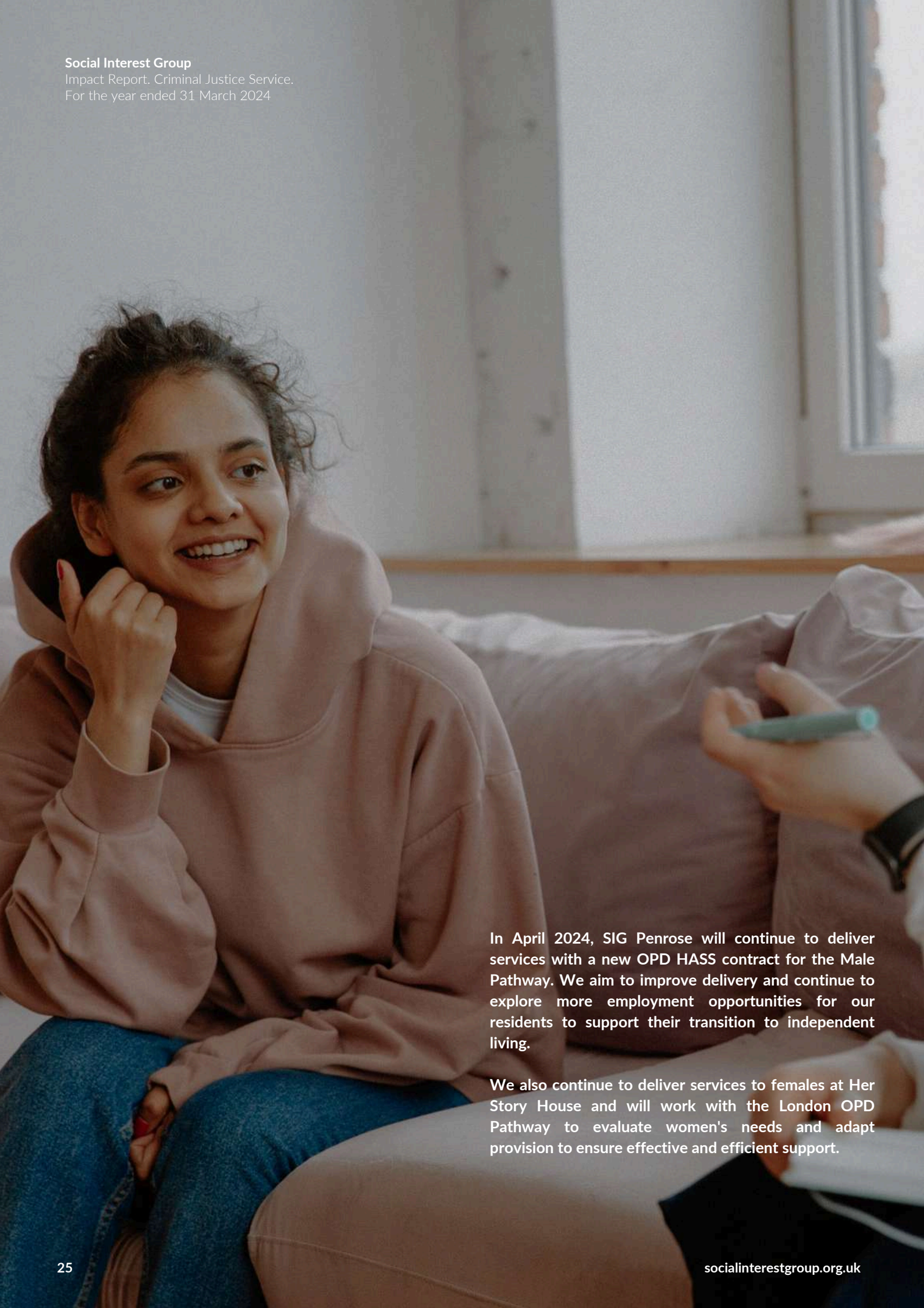
Mary's Reflections at HSH

Mary's experience highlights the tailored support HASS offers. Her transition to HSH was marked by significant personal growth and better management of her temper, which she attributes to the consistent and compassionate support from the staff. Her journey illustrates how the personalised care and involvement of HASS staff have been crucial in preventing her return to prison and aiding her in making constructive life changes.



Social Interest Group

Impact Report. Criminal Justice Service.
For the year ended 31 March 2024



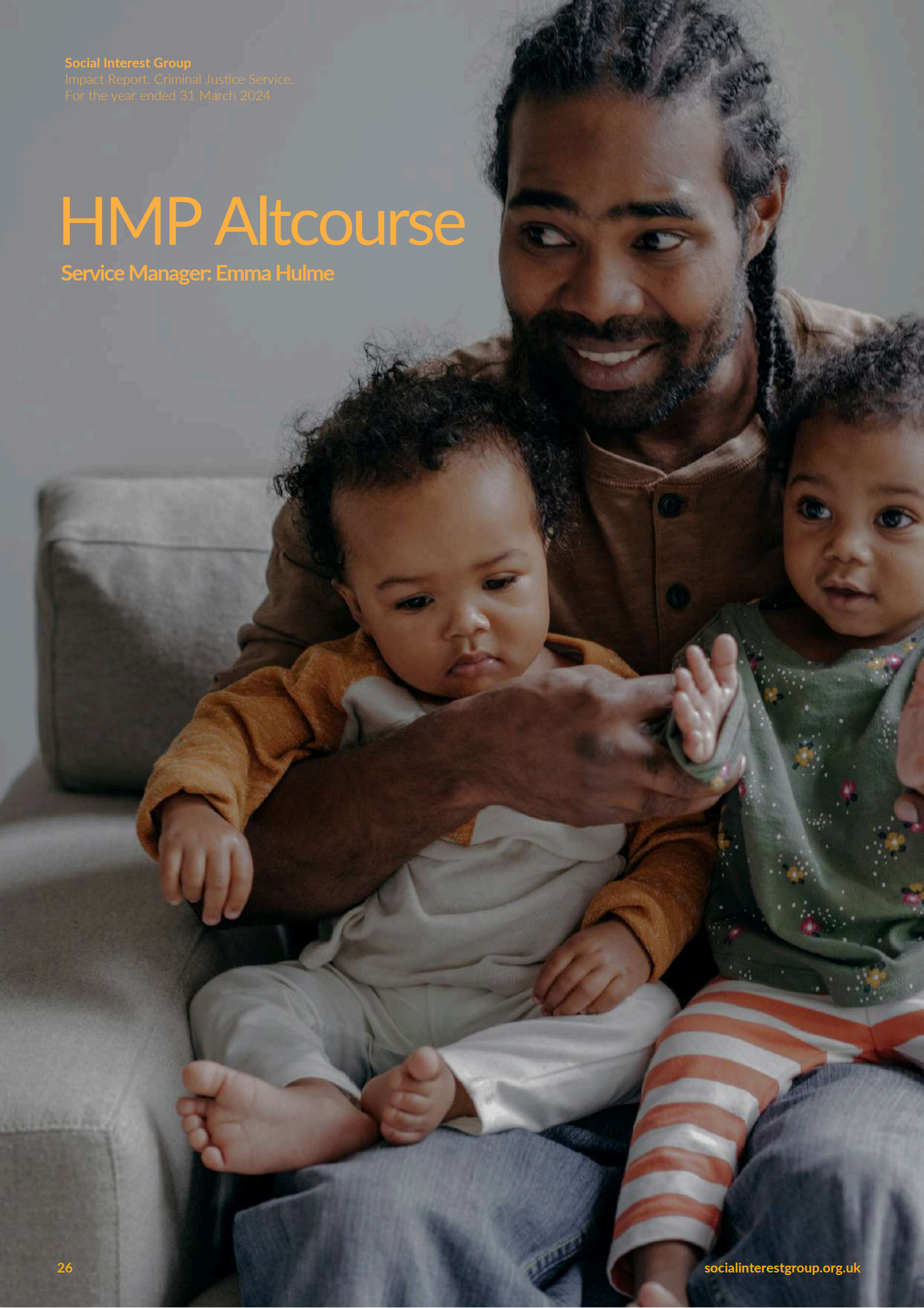
In April 2024, SIG Penrose will continue to deliver services with a new OPD HASS contract for the Male Pathway. We aim to improve delivery and continue to explore more employment opportunities for our residents to support their transition to independent living.

We also continue to deliver services to females at Her Story House and will work with the London OPD Pathway to evaluate women's needs and adapt provision to ensure effective and efficient support.

Social Interest Group
Impact Report: Criminal Justice Service,
For the year ended 31 March 2024

HMP Altcourse

Service Manager: Emma Hulme





HMP Altcourse

Building Family Ties

In June 2023, SIG Safe Ground took over the management of the Family Service at Sodexo's HMP Altcourse. A first of its kind for all involved, the Family Service delivers an innovative model, building family ties while employing an arts-based, therapeutically informed approach. Our service includes working with families and visitors seven days a week in the Outside Visitors Centre, a new family counselling service, and delivering Safe Ground's arts-based therapeutic group work programmes across the prison.

HMP Altcourse is a Category B local prison currently housing 1200 men in custody. The site serves the Liverpool Magistrate courts, which are receiving a high remand population.

As a result, we support many first-time visitors and families who may only be with our service for a couple of weeks or months; last year, we supported 39,605 visitors. Managing the Outside Visits Centre means our friendly, supportive Family Liaison team work tirelessly to provide a warm and welcoming space during an extremely stressful time in people's lives. In partnership with Altcourse staff, we are developing an innovative and exciting new model that serves and supports our families, putting creative and trauma-informed practice at the heart of our work.

HMP Altcourse

Our Impact



Our monthly Family Days are an extended special visit that allows family and friends to spend quality time with fewer restrictions, an essential space for both men in custody and their families. We work in partnership with the Give A Book scheme through Prison Reading Groups to offer a selection of books for each Family Day event. Each child at the event can choose a book to encourage reading with parents and at home. We've given out over 300 new books in 2023/24, promoting a prison-wide reading strategy.

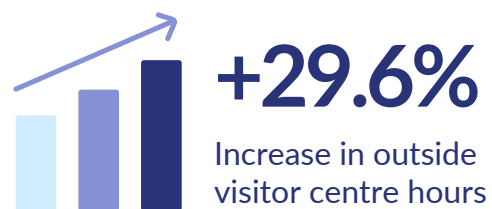
Our programmes are actively anti-punitive and offer opportunities for men to build a sense of shared ownership over the work and develop shared responsibility for themselves and each other.

By aiding the development of new skills, including creative and 'non-traditional', and employing our group work model, the group becomes connected and accountable to each other rather than systems or authority, enabling sustainable personal change.

Father's Inside* is SIG Safe Ground's flagship family relationships programmes, the first of its kind to be delivered across prisons nationwide. We delivered for the first time at HMP Altcourse in March, facilitating an arts-based methodology. We supported the group in better understanding themselves, their lived experience, and the potential impact on family relationships.

Man Up is our arts-based group work programmes, which we have delivered six times since September 2023. The programmes is designed to support groups of young and adult men in prison in considering the values, attitudes, and thinking so often informed by those cultural norms and the associated pressures and expectations of being a 'man'.

In January 2024, our new Family Counsellor joined the team, which was another first for SIG Safe Ground, enabling us to create and deliver bespoke counselling for men who've engaged with our service and their families. Our Family Counsellor has co-facilitated full-time on the Fathers Inside.



*Fathers Inside MoJ [Data Lab study](#) demonstrated statistically significant reductions in reoffending



HMP Altcourse

Our Impact

We are incredibly proud of the work achieved over the last 12 months, working simultaneously to support both men in custody and their families. Healthy relationships are a key criminogenic need to reduce reoffending. SIG Safe Ground supports family contact, with a unique opportunity at HMP Altcourse to work with everyone affected by a man going to Prison. We work with the men in custody on programmes while supporting their families, creating friendly environments for children and providing family counselling.

- Outside Visits Centre: We successfully moved from being open for 54 hours a week to 70 hours, increasing our available weekly visits from 21 to 28.
- Family Counselling Service: 950 hours of purposeful activity. Emotionally supporting clients is a vital part of the Fathers Inside delivery team. Provided empathetic counselling during and after the programmes, focusing on client well-being and continued care.
- programmes: 7 Delivered, 57 Men completed programmes, 100% Successful programmes Completion.
- Presentations: Delivered 7 presentations, receiving 227 audience members, including HMP Altcourse Senior Leadership Team (SLT), Offender Management Unit (OMI), probations teams and external services such as Damien John Kelly House, CFO Activity Hubs and Phoenix Futures.

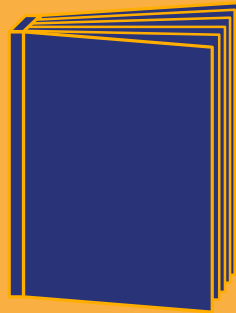


HMP Altcourse

Our Impact Stats

39,605

Total visitors (including repeat visitors)



300

Books given out



57

Men that completed programmes

11

Family days



1562.5

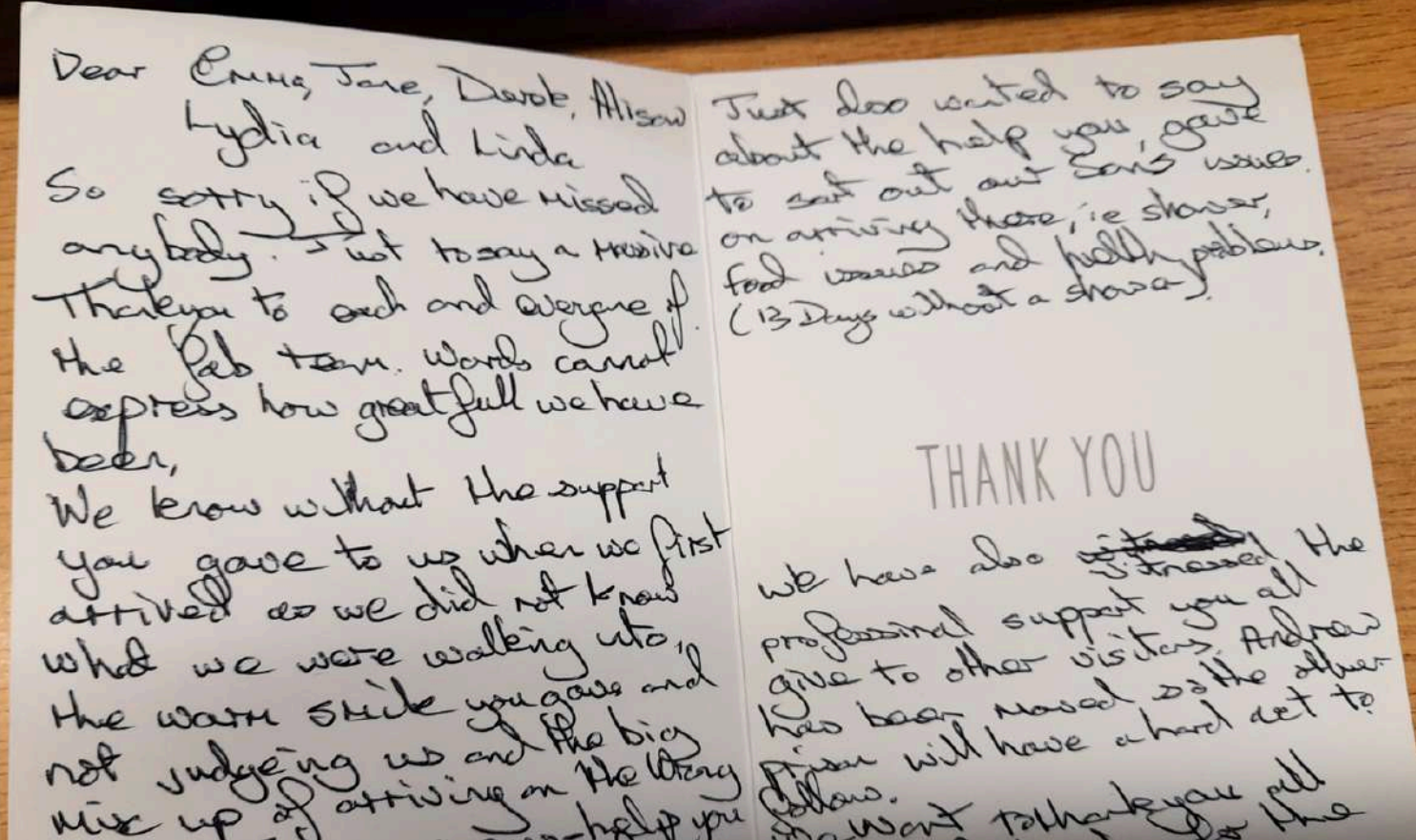
Hours of purposeful activity delivered



227

Audience members





HMP Altcourse

Family Impact Stories

Illustrating the significant impact of the SIG Safe Ground team's commitment to fostering a supportive environment within the confines of a correctional facility. This narrative not only highlights the challenges faced by families of incarcerated individuals but also underscores the transformative potential of empathy and support.

Heartwarming Gestures of Gratitude

The journey begins with a family from Cheshire whose son spent 175 days at HMP Altcourse. During this trying period, the family experienced a spectrum of emotions, from despair to hope, largely influenced by the support they received from the prison's Visitor Centre Team. The team's approach went beyond conventional duties; they provided a compassionate space that eased the family's burden, helping them navigate the complexities of having a loved one in prison.

One of the most touching aspects of this family's experience was the extraordinary level of care shown during their visits. From addressing initial setbacks, such as the son's lack of access to basic amenities like a shower, to organising family days that offered

moments of joy and normalcy, the staff's efforts were pivotal in transforming the prison visit experience from one of anxiety to one of comfort.

Lasting Impact and Personal Acknowledgment

The gratitude felt by the family extended beyond their son's transfer to another facility. Moved by the kindness and support of the Altcourse staff, the family returned to the prison to personally deliver gifts of tea, coffee, and a heartfelt card to the team. This gesture was not just a simple thank you; it was a profound acknowledgement of the lasting impact the staff had made on their lives. This act of kindness also highlighted the deep human connections formed, transcending the usual interactions expected at a prison.

This narrative from HMP Altcourse serves as a powerful reminder of the capacity for kindness in every setting, even those as unlikely as a prison. The SIG Safe Ground team's dedication to treating each visitor and resident with dignity and respect has cultivated an atmosphere where positive relationships can flourish, significantly altering the traditional perceptions of prison environments.

HMP Altcourse

Future Outlook

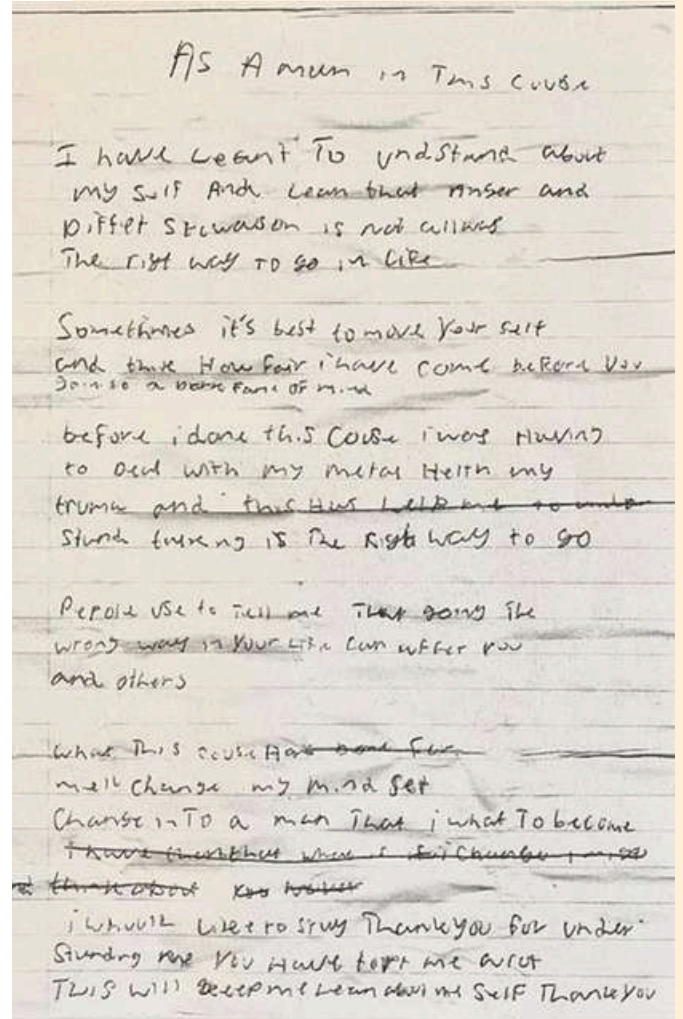
Future Plans

This coming year we hope to build a clear roadmap for the service, working on what success looks like for us, our men and our families. We're aiming to work with a critical friend and evaluator to help us deliver our mission and build clear, measurable aims after a busy set-up period!

Partnerships

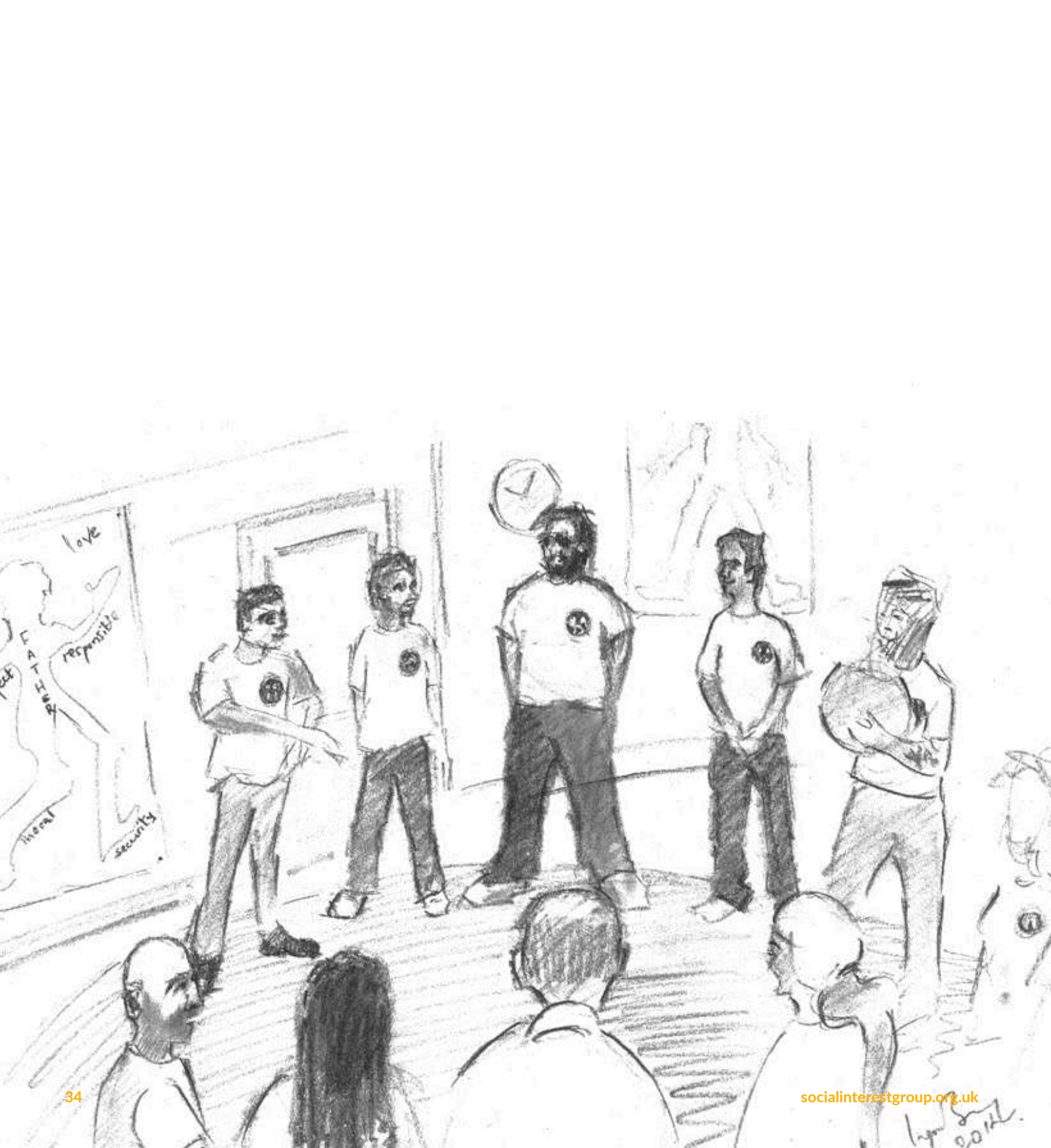
We've also built new ideas and partnerships for the service to help grow and cement our work here at HMP Altcourse, in Merseyside and nationally. We've submitted bids to HMPPS for a new service that would directly support the transition of men from custody into the community. We've also partnered with a Mexican theatre company, La Cana, to support as UK experts on a new initiative working with women in prison in Mexico.

We're committed to leading and changing conversations here at Altcourse and nationally about what 'good practise' looks like across the UK prison system. Our main focus over the next few months will be to fully embed our new Counselling Service and the re-introduction of a Play facility for our children.



HMP Lowdham Grange

Service Manager: Adam Shaw





HMP Lowdham Grange

Family and Rehabilitation Services

SIG Safe Ground at HMP Lowdham Grange, a category B training prison situated in Nottingham, operated by Sodexo. This contract went live in January 2024 and represents a groundbreaking initiative in incarcerated men's rehabilitation and family integration. This service is dedicated to nurturing healing, growth, and strengthening familial bonds through innovative and transformative approaches. HMP Lowdham Grange houses adult male offenders aged 21 and over with sentences over four years and with at least 12 months to serve. It has a maximum capacity of 920.

The core of SIG Safe Ground's mission involves enhancing familial relationships through targeted interventions like the Fathers Inside and Man Up programmes. These arts-based group sessions are designed to strengthen family bonds and foster essential skills such as effective communication, empathy, and understanding, paving the way for successful societal reintegration.

These programmes are integral to HMP Lowdham Grange's new 'Family Pathway' strategy, focusing on enhancing family relationships through structured and impactful interventions. SIG Safe Ground's efforts are holistic, addressing the needs of men within the prison and extending support to their families outside, ensuring a comprehensive approach to rehabilitation.

HMP Lowdham Grange

Prison Impact Stories

Prison Wings

A landmark moment this year was our staff's initial venture onto the actual prison wings. This direct engagement with the men was vital to building trust and understanding, which are crucial components of our mission. The interactions on the wings led to enriched dialogues, bringing forth a wealth of ideas and a profound perspective on the everyday realities and challenges faced by those within the prison.



Taster Sessions

SIG Safe Ground successfully hosted two taster sessions at HMP Lowdham Grange, which served as a preliminary introduction to our programmes. Despite challenges such as limited space and the unpredictable nature of prison life, the sessions were successful, drawing commendable participation and sparking insightful discussions among the men. These sessions highlighted the importance of adaptability and the strong interest among participants in exploring themes of identity and resilience, setting the stage for deeper engagement in our upcoming programmes.

Family Days

Significant to our efforts were the Family Days, designed to strengthen family bonds and support networks crucial for the inmates' rehabilitation. These events not only provided relief and joy to the families but also reinforced the value of community support in the rehabilitation process. Feedback from these days has been overwhelmingly positive, indicating a strong appreciation for the safe and supportive environment facilitated by our team.



Training and Community Building

As we embark on our journey to embed our service, our team have completed extensive Prison Induction Training, which equipped them with the essential skills they needed to navigate the prison, such as carrying their own keys. More importantly, these training sessions were shared with newly recruited Prison Custody Officers (PCO) and Operational Support Officers (PSO), fostering early connections and integrating our philosophies into the fabric of the prison's daily operations. By participating alongside prison staff and engaging in team-building activities, SIG Safe Ground has established a solid foundation for its work, promoting an environment of growth and understanding.



HMP Lowdham Grange

Future Outlook

Future Plans

We will build relationships with HMP Lowdham in the upcoming year to support staff development and culture change. We will focus on embedding a Calendar of programmes to deliver Fathers Inside and Man Up. A focus is to reimagine Family Services and evaluate the support families at HMP Lowdham need to help improve family relationships.



Partnerships

Continuing our collaboration with prison staff and residents is crucial. We plan to establish regular workshops and feedback sessions that allow us to gather direct input from participants and staff, which will inform the ongoing development of our programmes. This approach ensures that our initiatives are well-targeted and foster a sense of community and shared purpose.

Visitor Centre Improvements

Upcoming improvements to the outside visitors center include new furniture and picnic benches to create a comfortable, family-friendly environment. Additionally, we will brighten the space with vibrant murals on the interior walls, fostering a welcoming atmosphere that supports positive family interactions.

Public Engagement

Safe Ground is exploring the possibility of organising external exhibitions in collaboration with local art galleries and museums. These exhibitions will not only showcase the artistic and creative works of our participants but will also serve to educate the public about the rehabilitation process and the importance of supporting reintegration efforts.



Glossary of terms

CFO: Co-financing Organisation

CJS (Criminal Justice Services): The range of services provided to support the rehabilitation and reintegration of individuals involved in the criminal justice system.

Desistance Theory: A framework that explores the process by which individuals desist from criminal behaviour and the factors that support this change.

Enabling Environments: Spaces or programmes designed to foster skills, understanding, and behaviours that support the rehabilitation and wellbeing of residents.

Family Pathway: A strategic approach within correctional facilities focusing on strengthening family ties and support systems to aid the rehabilitation process.

HASS: Housing and Accommodation Services

HSH (Her Story House): A specialist high-support female residential service specifically designed for women with multiple and complex needs who have offended.

HMPPS: His Majesty's Prison and Probation Service.

IAP – Independent Approved Premises

NAPA (National Approved Premises Association): An association involved in setting standards and providing support within approved premises for individuals in the criminal justice system.

OMU: Offender Management Unit

OPD: Offender Personality Disorder

PDU – Probation Delivery Unit

PIE (Psychologically Informed Environment): A living or working environment structured to consider the psychological needs of its occupants, aiming to foster personal development and reduce reoffending.

Rehabilitation: Processes and programmes designed to reintegrate individuals into society with the skills and mindset to live law-abiding lives.

Reintegration: Reintegrating someone into society, particularly focusing on former offenders returning to community living after serving their sentence.

SIG – Social Interest Group

SLT: Senior Leadership Team



Social Interest Group:

1 Waterloo Gardens, Milner Square, London, N1 1TY

Telephone:

020 3668 9270

Email:

enquiries@socialinterestgroup.org.uk

Social Interest Group (SIG) is a leading UK charity providing bespoke person-centred health and social care services through SIG Penrose, SIG Equinox, SIG Pathways to Independence, SIG Safe Ground, and SIG Housing Trust. Our mission is to empower people by building powerful partnerships and creative solutions that bridge gaps in provision and aid recovery, reablement and resettlement.



@socialinterest_

www.socialinterestgroup.org.uk

Charity no. 1158402 | Company no. 9122052



Penrose

Equinox

Pathways to
Independence

SIG Housing Trust

Safe Ground